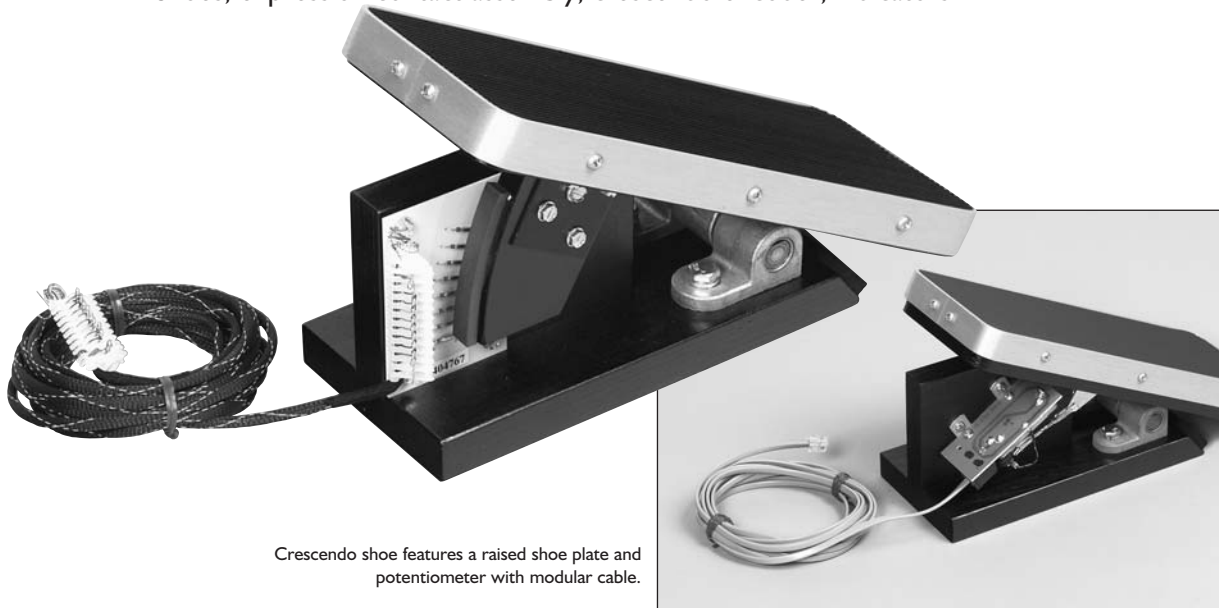


# Expression and Crescendo

Shoes, expression contact assembly, crescendo encoder, indicators



Crescendo shoe features a raised shoe plate and potentiometer with modular cable.

- Durable, silent pivot.
- Easily adjustable resistance to motion.
- Reed switch expression contacts: 8 or 16.
- Long life precision crescendo potentiometer.
- Attractive brushed aluminum trim.

Peterson offers a full line of expression and crescendo shoes, expression shoe contacts, crescendo shoe encoders, lighted bar graph indicators, and round LED indicators.

All Peterson shoe assemblies are designed to provide a firm and even resistance for ultimate control and long lasting durability. Sturdily constructed to AGO specifications, these shoes need no seasonal adjustment or lubrication. The pivot mechanism is centered around a 1/2" diameter solid steel shaft in oil-impregnated bronze bearings for smooth, quiet motion. The tension may be set to your individual liking with a simple adjustment. Ribbed footpads are provided in both brown and black with a distinctive brushed aluminum edge trim that adds a touch of class.

Peterson Expression Shoe Assemblies utilize magnetically operated, hermetically sealed reed switches to provide flawless contact performance in any environment. Shoes are available in eight- and sixteen-stage versions and include a cable designed to plug onto standard Peterson junctions. Each contact is rated at 500 mA, non-inductive or diode suppressed.

Crescendo Shoe Assemblies are specifically designed for use with the MSP-1000,™ ICS-4000™ or Jumper Wire Crescendo Setter systems. A high precision, long life potentiometer is used in place of vulnerable roller contacts. A modular style cable is provided to plug directly into the Peterson crescendo system of your choice. The shoe plate is raised slightly relative to that of our expression shoes in traditional fashion.

For rebuild projects where it is desirable to retain the appearance of original shoes, reed switch expression contact assemblies and a potentiometer-based crescendo shoe encoder assembly are available. These assemblies are designed to mount to most existing shoes and are smaller and more convenient to install than most rollers. Our expression contact system was completely redesigned in 2002 and is now more compact and much easier to install and adjust to match the travel of any shoe. Expression contact systems are now offered in both eight- and sixteen-stage models.

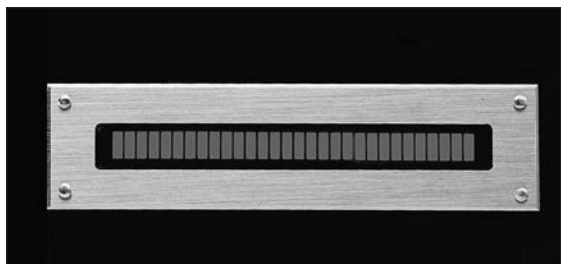
For an attractive and useful visual indication of each shoe's position, we recommend using our LED Bar Graph Assembly. Available with red, green, or yellow LED segments, each bar graph may be used to indicate the position of one crescendo shoe or up to three expression shoes.

Bezel choices include brushed solid brass, light ivory colored plastic, or a black anodized extruded aluminum style that coordinates well with ICS-4000 control panels. Individual round LED indicators in brass bezels are also available for a simple indication of whether a crescendo shoe is advanced.

Round LED indicators are available in several colors.

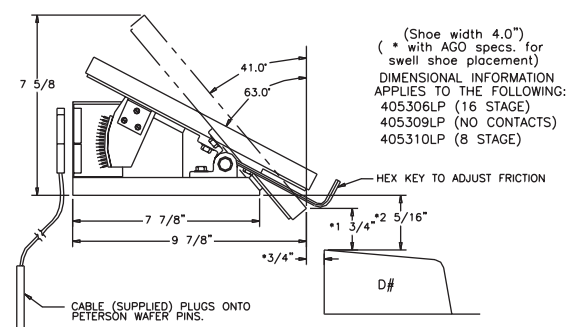


TECHNICAL INFORMATION

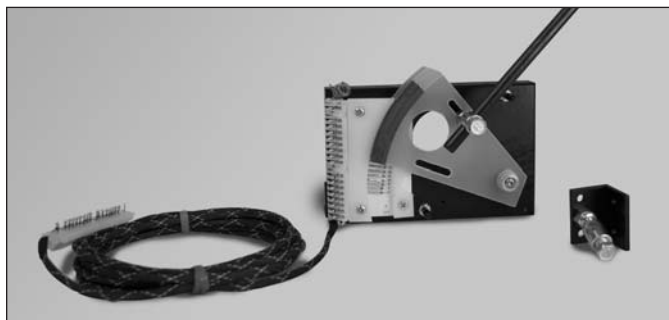


Bar graph LEDs are available in three colors, with or without engraving. See the ICS-4000 section for an optional bezel style.

Expression Shoe Dimensions

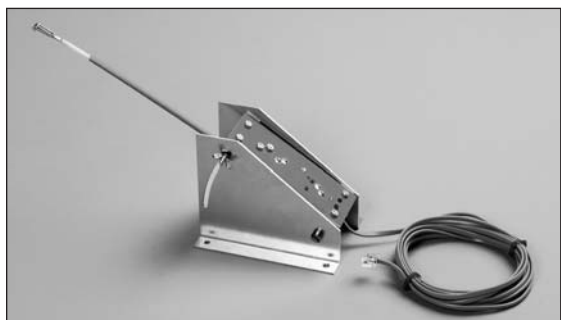
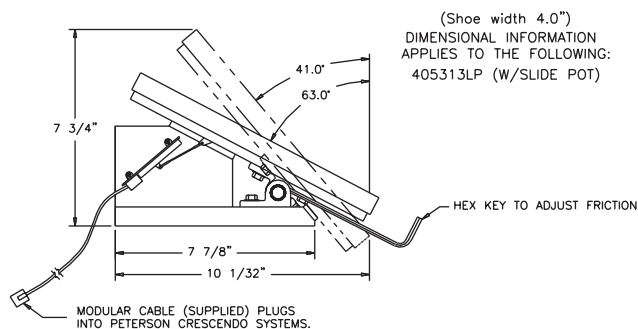


EACH REED SWITCH CONTACT IS RATED AT 0.5 AMP. FOR INDUCTIVE LOADS (COILS), A FLYBACK DIODE MUST BE USED.



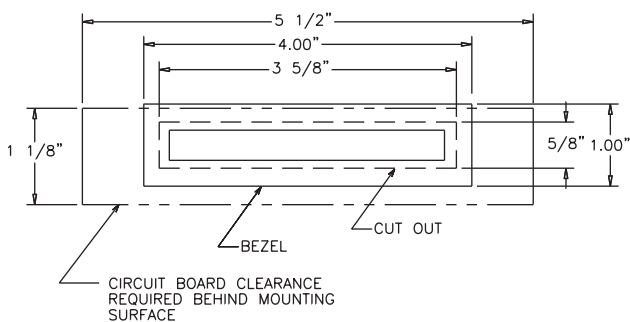
New reed switch expression contact assembly includes a cable and is very simple to install.

Crescendo Shoe Dimensions



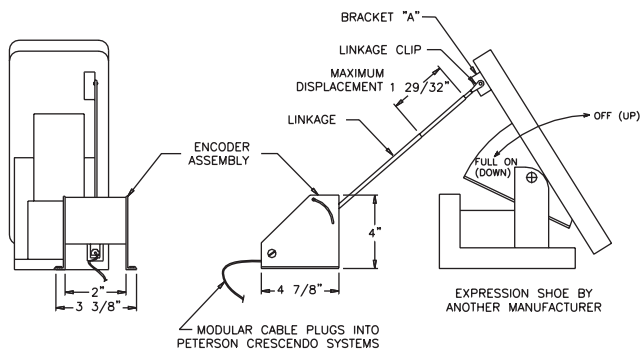
Crescendo encoder is for use with Peterson control systems and non-Peterson shoes.

Mounting Information, Bar Graph Readout with Brass or Plastic Bezel



Crescendo Shoe Encoder

MOUNTING AND INITIAL ADJUSTMENT



Expression Shoe Contact Assembly

MOUNTING AND INITIAL ADJUSTMENT (16 OR 8 CONTACTS)

