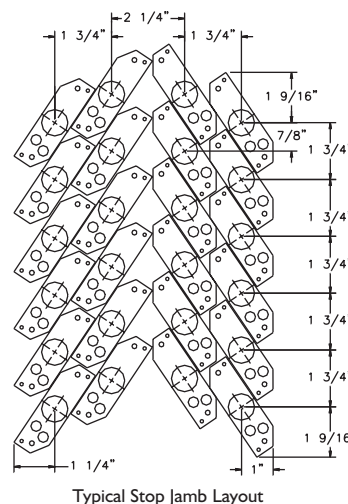
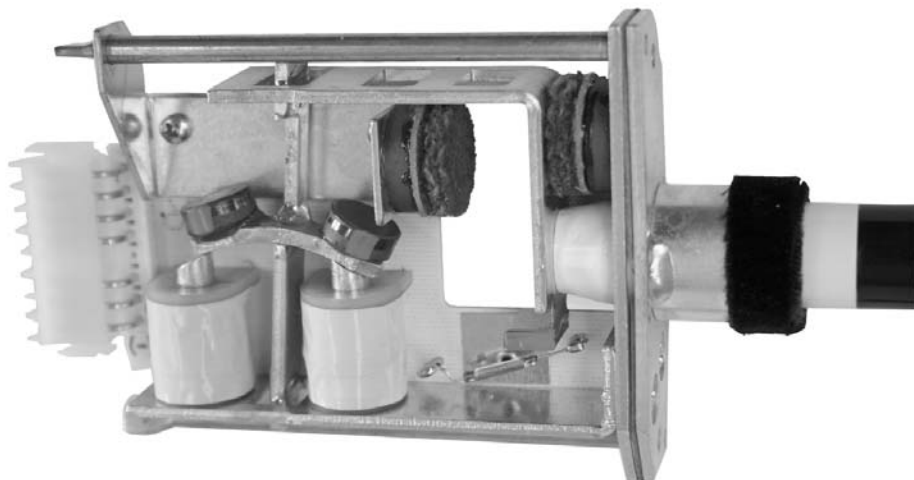


# PowerKnob™

Superior performance in a compact package

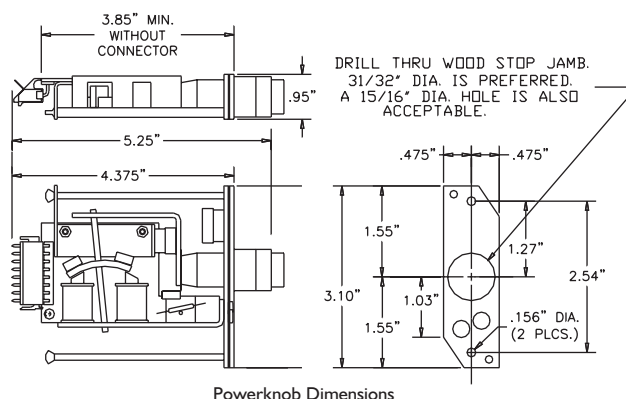


The Peterson PowerKnob™ represents a totally fresh approach to drawknob design. Its short length, two part mounting configuration and “nesting” layout pattern allow it to be easily installed in spaces that simply won’t accommodate competitive products. Precision hinges, large bushing cloth bumpers and a firm magnetic toggle action give the PowerKnob a smooth, high quality feel.

The PowerKnob’s unique design does not incorporate solenoids or parts that slide in channels. Instead, a pair of precision “zero clearance” pressed hinges provide quiet and rattle-free motion. A magnetic circuit similar to that of the PowerTab utilizes Peterson’s patented “tip polarization” concept to optimize the power available from small coils, in turn contributing to the unusually compact size. A separate permanent magnet operates the reed switch contact, which is strategically located in a position free of stray electro-magnetic fields.

The two part design of each PowerKnob offers unprecedented mounting convenience. The attractive velveteen bushing is provided on a steel plate designed to mount to the stop jamb first. Mounting screws can be installed through flat plates with no obstructions to get in the way.

After all bushing plates are mounted, the matching steel front plate of each PowerKnob body is positioned and then secured with special long thumbscrews. An optional custom wiring harness with E-Z Wire™ connectors can then be plugged in place to complete connection to any Peterson combination action.



Drawknob stems are available in light ivory and black colors. Drawknob heads in your choice of three sizes can be custom engraved in a variety of font styles and several fill colors. Please contact a Peterson customer service representative for more information.

## Specifications (PowerKnobs)

Each PowerKnob is supplied with a light ivory plastic shank with black ring.

Stems are available separately in light ivory and black colors.

Heads are available engraved or unengraved in 1", 1-1/8", and 1-1/4" diameters, light ivory or black.

Bushings are brown velveteen. Black or blue bushings may be provided upon special order.