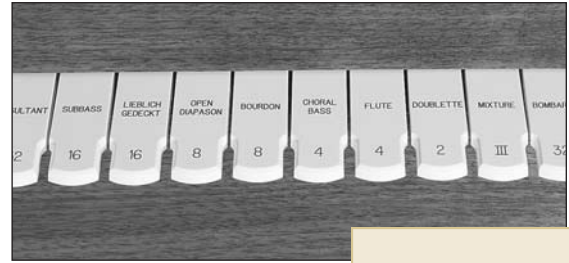
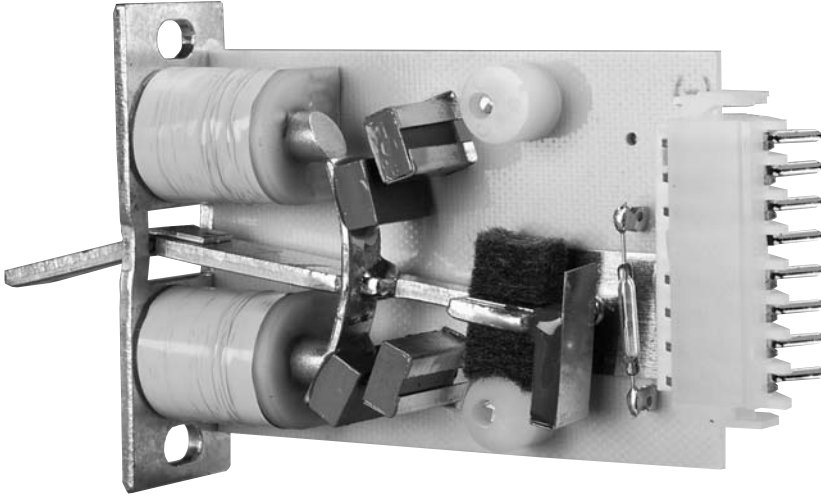
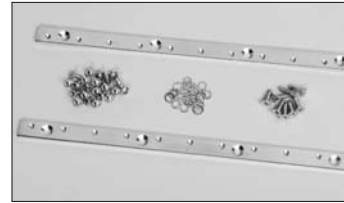


PowerTab™

“World Class” performance and feel



PowerTabs with notched style engraved tablets



Mounting Rail Kit

Two pairs of repelling toggle magnets for an excellent “feel.”
 Sturdy, precision-adjusted hinge.
 Large felt bumpers and convenient cam-style position adjustment.
 Reed switch contact for ultimate reliability with no maintenance.

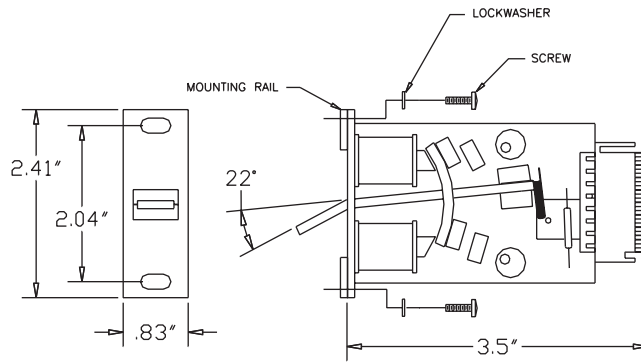
Peterson engineers designed the PowerTab™ to be the best feeling, most convenient to install, and most electromagnetically efficient product of its kind. A strong, smooth toggle action is provided by two pairs of repelling permanent magnets. A sturdy, precision hinge and large felt bumpers which rest against cam-action adjustable posts contribute to a quality feel and quiet movement.

The use of a patented Peterson discovery called “Tip Polarization” allows the firm toggle action force to be easily overcome during electrical operation of the “on” or “off” coil while maintaining compatibility with standard combination action voltage and current ratings. A hermetically sealed reed switch stop contact is provided for long term, maintenance free reliability.

Like other Peterson products, the PowerTab includes E-Z Wire™ connectors to simplify wiring. Complete custom wiring harnesses are available to totally eliminate the need to hand wire PowerTabs when used with any Peterson combination action system. To further simplify installation, we recommend the use of our Mounting Rail Kit. Each kit includes tapped metal mounting strips, machine screws, lock washers and flat head sheet metal screws for mounting up to eleven PowerTabs. Oval mounting holes make tab spacing easily adjustable.

Adapter brackets for various types of rocker tablet applications are available. These include direct-mount brackets for gluing a rocker face directly to the PowerTab, and two types of actuators for operating rocker faces that pivot on an independent axle. A Peterson customer service representative will be happy to discuss your requirements with you.

TECHNICAL INFORMATION



Power Tab Dimensions

General Specifications (for all Peterson stop controls)

Exclusive, patented “Tip Polarization” improves efficiency: U.S. Patent Number 4,726,277. Specify negative or positive coil common polarity as determined by the combination action used. All Peterson combination actions require negative coil common. Coil resistance 21 Ohms +/- 1 Ohm. (42 Ohm coils available for 24 VDC applications). Reed switch contact current 500mA max. Inductive loads require diode suppression, available for a nominal additional charge. Stop contact may be fed with positive or negative common. This need not be specified when ordering unless fly back diode protection for inductive loads is requested.

Specifications (PowerTabs)

Specify 22 degree angle for church organ tongue tab applications; 0 degree (straight) for rocker tablet applications; 10 or 17 degree for horseshoe style stop rails (consult the factory for more details).