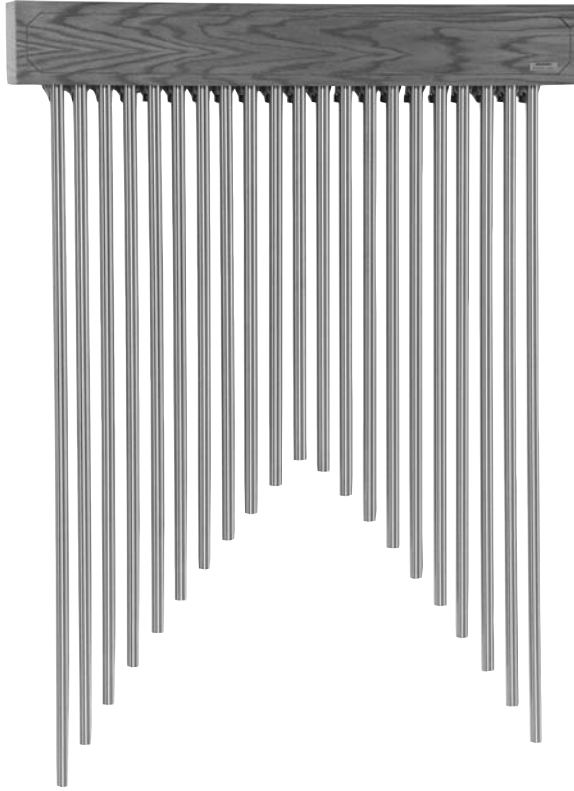


Cathedral Chimes™

A fresh approach to organ chimes



Patented striker design is quiet, efficient, and virtually maintenance free.

Dampers lift off tubes for as long as a key is held.

Solid state relay with fixed strike pulse timing is included.

Very easy to install in most organs.

Custom keying cables are available to further simplify installation.

Beautiful brushed brass tubes or aluminum chime bars.

Also available as an "action only" for use with older chime tubes.

Some years ago, Peterson set out to see what could be done to modernize and improve the traditional tubular chimes that have been part of fine organs for decades. It was quickly realized that chimes and chime actions were still being made the same way they had been made 40 years earlier. They still had the same problems with imprecise tuning; uneven and difficult to adjust actions; heavy and hard-to-install cables; sparking contacts; and a host of other pitfalls all too well known to organbuilders and service technicians. A subsequent two-year development program was begun to address and overcome these concerns, and ultimately the Peterson Cathedral Chimes™ system was introduced.

Many significant developments contribute to this quantum step forward in bell and chime instrument design. An exclusive and patented magnetic repulsion striker action is maintenance free and remarkably simple, replacing heavy and rattle-prone striker solenoids altogether. A solid state relay is provided pre-mounted to the chime rail and wired to each note action. Timing circuitry delivers a uniform keying pulse regardless of how quickly a key is pressed. Electronically controlled dampers are lifted for as long as a given key is depressed for musical flexibility. A wide dynamic range is available through use of a five-position volume control switch.

Beautiful satin-finished brass chime tubes or silver colored anodized aluminum bars are precision tuned with Peterson stroboscopic tuning instruments and engineered for optimal harmonic development. A Peterson chime rail and relay may also be provided as an "action only" to replace an old, defective action while utilizing original tubes having diameters up to 1-1/2 inches.

The Cathedral Chimes system's easy connection to almost any pipe organ requires only a small cable, making it practical to display chimes and to better capitalize on their beautiful appearance. No separate relay, chime driver or independent contact system is usually required when connecting it to play from organ keyboards. Custom made keying cables are available from Peterson.

No adjustment should ordinarily be required after the system has been properly installed. The much simpler installation and set-up of this design saves valuable time.

TECHNICAL INFORMATION

Cathedral Chimes Tube Arrangements

Key Assignment Chart



KEY INPUT # - 25 NOTE CHIME	1	2	3	4	5	6	7	8	9	10	11	12	13	14	15	16	17	18	19	20	21	22	23	24	25
CHROMATIC LOW NOTE LEFT	G 20	G# 21	A 22	A# 23	B 24	C 25	C# 26	D 27	D# 28	E 29	F 30	F# 31	G 32	G# 33	A 34	A# 35	B 36	C 37	C# 38	D 39	D# 40	E 41	F 42	F# 43	G 44
CHROMATIC LOW NOTE RIGHT	G 44	F# 43	F 42	E 41	D# 40	D 39	C# 38	C 37	B 36	A# 35	A 34	G# 33	G 32	F# 31	F 30	E 29	D# 28	D 27	C# 26	C 25	B 24	A# 23	A 22	G# 21	G 20
REGULAR	G 44	F 42	D# 40	C# 38	B 36	A 34	G 32	F 30	D# 28	C# 26	B 24	A 22	G 20	F# 23	A# 25	C 27	E 29	F# 31	G# 33	A# 35	C 37	D 39	E 41	F# 43	G 44
INVERTED	G 20	A 22	B 24	C# 26	D# 28	F 30	G 32	A 34	B 36	C# 38	D# 40	F 42	G 44	F# 43	E 41	D 39	C 37	A# 35	G# 33	F# 31	E 29	D 27	F 25	A# 23	G# 21
KEYING INPUT PIN # 21 NOTE CHIME	1	2	3	4	5	6	7	8	9	10	11	12	13	14	15	16	17	18	19	20	21				

For your convenience in wiring the keying inputs for your PETERSON CATHEDRAL CHIMES, this chart shows the assignment of notes to each pin on the keying junction for four popular configurations.

Exclusive Magnetic Repulsion Striker Action Specifications

Dimensions: 21 Note Set: 50-3/4" L x 7-1/2" H x 6-1/2" D. Top of canopy to bottom of longest tube 70". 25 Note Set: 59-1/4" L x 7-1/2" H x 6-1/2" D. Top of canopy to bottom of longest tube 78-1/2". Split rail configurations are also available.

Tubes: 1- 1/4" seamless brass with no die lines or ridges. Precision strobe tuned and brushed to a satin gold finish, then lacquered to protect the chimes and keep them looking beautiful for years to come. Also available with solid aluminum bar chimes; brushed, clear lacquered and precision strobe tuned.

Electrical Requirements: Class II transformer (supplied) 110-117 Volts 50-60 Hz 50 VA.

Stop Control: The stop polarity is positive on a standard unit, but negative may be specified. Can be connected to an existing chimes stop tablet, if available.

Keying: Designed for easy connection to most organs using existing contacts. Factory assistance is available for specifics as to the best way of connecting to any pipe organ. Power to operate strikers is provided by the power supply included with the chime action.

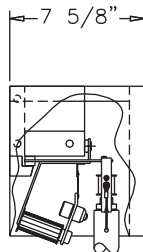
Optional Canopy: Walnut or Red Oak with a clear satin finish. Other woods and custom finishes are available by special order at an extra cost.

Controls: 5-position volume switch with an additional "off" position.

Range: 21 Note Set: A-22 (440 Hz) though G-43 (1397 Hz); 25 Note Set: G-20 (392 Hz) through G-45 (1568 Hz).

All materials and workmanship are warranted for 10 years from date of purchase.

21 & 25 Note Chime Rail, Canopy Mounting Dimensions



	21 NOTE	25 NOTE
CANOPY (A)	51"	59 3/4"
ACTION RAIL (B)	49 7/8"	58 5/8"

